

IDEE DA CUCIRE

mensile € 4,50 ITALY ONLY

La mia

BOUTIQUE

ANNO XXIII N. 5
MAGGIO 2008

Poste Italiane Spa - Sped. Abb. Post. - 70% DGB Roma - contiene inserto redazionale

**ABITI, GIACCHE,
SOPRABITI**
ELEGANZA DA CITTÀ

**GONNE E
CAMICETTE**
IL TRIONFO
DEL COLORE

MODA GIOVANE
GIACCHE,
BOMBER,
PANTALONI

TAGLIE FORTI
IL RITORNO
DEI TESSUTI FANTASIA
ABITI SEMPLICITÀ

**MODA PRIMAVERA
ANTICIPO D'ESTATE**

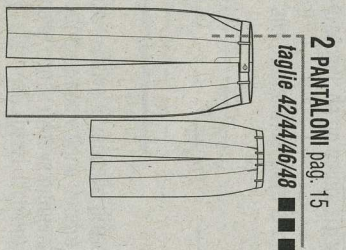


hpo

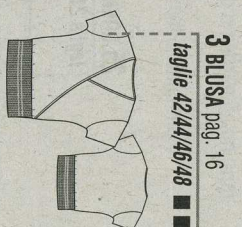
Belgio €9,50 Lussemburgo €9,50 Germania €11,00 Austria €11,00 Canton Ticino SFR.13,00 Portogallo €7,60 Spagna €7,30



1 GIACCA pag. 14
taglie 42/44/46/48 ■■



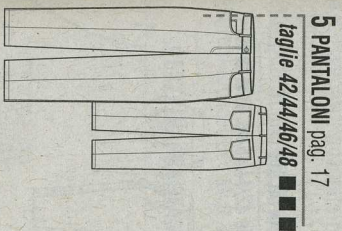
2 PANTALONI pag. 15
taglie 42/44/46/48 ■■



3 BLUSA pag. 16
taglie 42/44/46/48 ■■



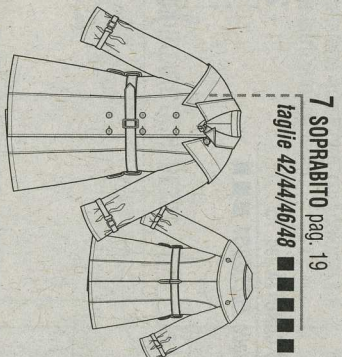
4 CARDIGAN pag. 17
taglie 42/44/46/48 ■■



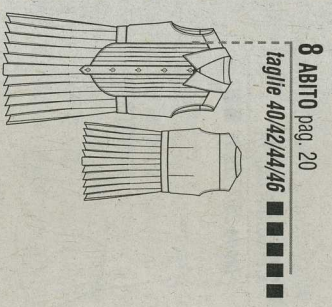
5 PANTALONI pag. 17
taglie 42/44/46/48 ■■



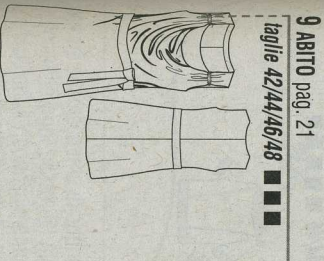
6 ABITO pag. 18
taglie 44/46/48/50 ■■



7 SOPRABITO pag. 19
taglie 42/44/46/48 ■■



8 ABITO pag. 20
taglie 40/42/44/46 ■■



9 ABITO pag. 21
taglie 42/44/46/48 ■■



10 MAGLIETTA pag. 23
taglie 40/42/44/46 ■■



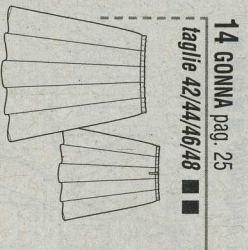
11 GONNA pag. 23
taglie 40/42/44/46 ■■



12 MAGLIETTA pag. 24
taglie 42/44/46/48 ■■



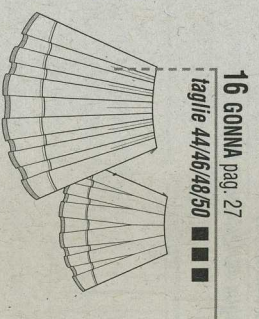
13 BLUSA pag. 24
taglie 42/44/46/48 ■■



14 GONNA pag. 25
taglie 42/44/46/48 ■■



15 CANOTTA pag. 26
taglie 44/46/48/50 ■■



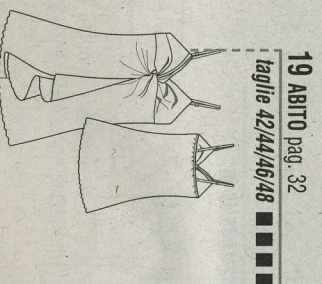
16 GONNA pag. 27
taglie 44/46/48/50 ■■



17 ABITO pag. 30
taglie 40/42/44/46 ■■



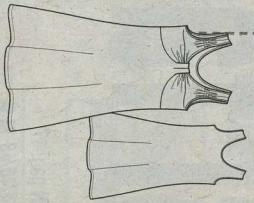
18 GIACCA pag. 31
taglie 40/42/44/46 ■■



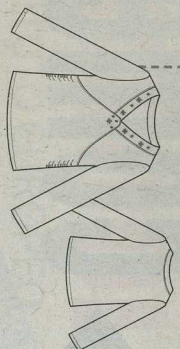
19 ABITO pag. 32
taglie 42/44/46/48 ■■

ATTENZIONE
Per consentire un migliore
utilizzo dei cartamodelli,
i fogli dei tracciati sono
diventati quattro

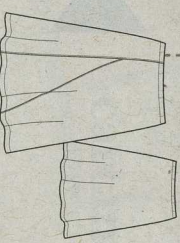
20 ABITO pag. 33
taglie 44/46/48/50 ■■■



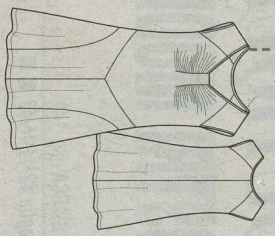
21 BLUSA pag. 70
taglie 21/23/25/27 ■■■



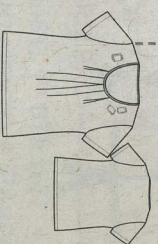
22 GONNA pag. 71
taglie 21/23/25/27 ■■■



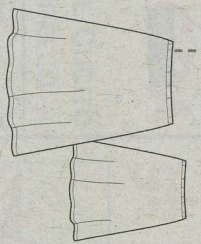
23 ABITO pag. 71
taglie 25/27/29/31 ■■■



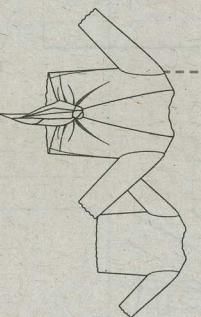
24 MAGLIETTA pag. 72
taglie 21/23/25/27 ■■■



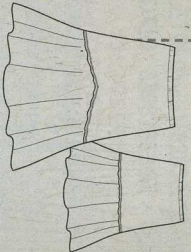
25 GONNA pag. 73
taglie 21/23/25/27 ■■■



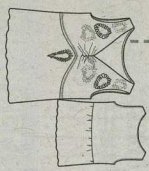
26 BLUSA pag. 74
taglie 25/27/29/31 ■■■



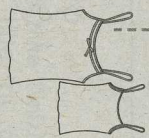
27 GONNA pag. 74
taglie 29/27/29/31 ■■■



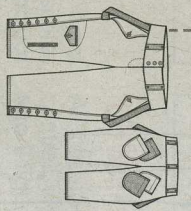
28 CANOTTA pag. 75
taglie 29/27/29/31 ■■■



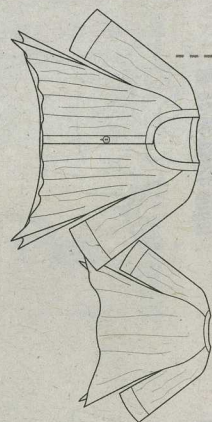
29 TOP pag. 78
taglie 42/44/46/48 ■■■



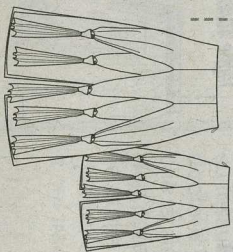
30 PANTALONI pag. 78
taglie 42/44/46/48 ■■■



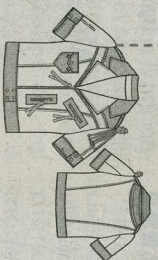
31 GIACCA pag. 79
taglie 42/44/46/48 ■■■



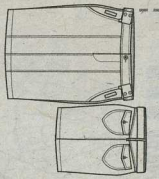
32 GONNA pag. 80
taglie 40/42/44/46 ■■■



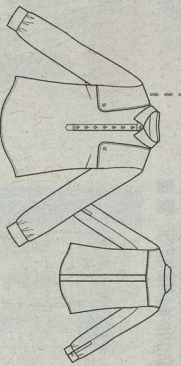
33 GIACCA pag. 81
taglie 40/42/44/46 ■■■



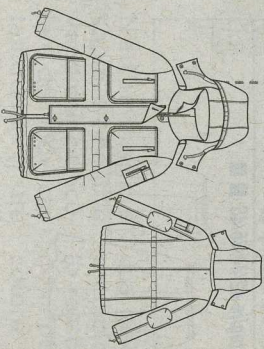
34 GONNA pag. 82
taglie 40/42/44/46 ■■■



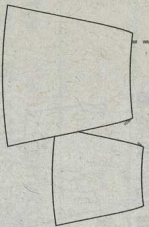
35 CAMICIA pag. 82
taglie 40/42/44/46 ■■■



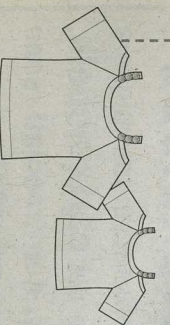
36 PARKA pag. 83
taglie 40/42/44/46 ■■■



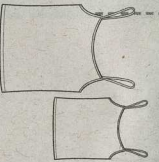
37 GONNA pag. 86
taglie 42/44/46/48 ■■■



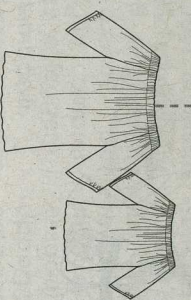
38 BLUSA pag. 87
taglie 42/44/46/48 ■■■



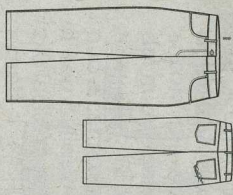
39 TOP pag. 88
taglie 42/44/46/48 ■■■



40 BLUSA pag. 89
taglie 42/44/46/48 ■■■



41 PANTALONI pag. 89
taglie 42/44/46/48 ■■■



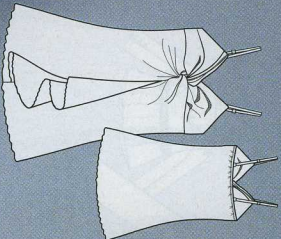
ABITO

TAGLIE DA 42-48

TRACCIATO VERDE FOGLIO F



Corto, stile sottoveste per l'abito a grandi ramage neri su fondo bianco, morbidamente arricciato sotto il seno. Leonora, calze Bombana, accessori Sharra Pagano, scarpe Valleverde.



19





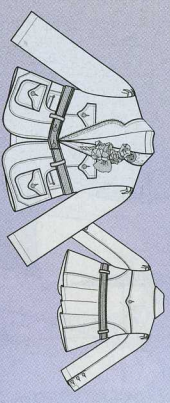
GIACCA

TAGLIE DA 40-46

TRACCIATO NERO FOGLIO D



Tessuto di jeans
per la cortissima giacca
impunturata, con il collo
a revers arrotondati
e la piccola cintura
che la chiude sotto
il seno. Tricot Jeans,
bracciali Sharra Pagano.



18